

Becoming a Member

To become a member, simply contact our membership coordinator (see contact information on back) or go to our website (www.sapcg.org) for a Membership Application form. Complete this form and either mail it with your payment to P.O. Box 380642, San Antonio, TX 78268 or pay the membership coordinator in person.

Dues:

\$24/year for individual

\$30/year for family (living at same address)

After January, dues are prorated for the year at a rate of \$2/month for individuals and \$2.50/month for families.



Guests are welcome to attend a meeting to see what we're about. Members of other polymer clay guilds are welcome to attend meetings without charge.

San Antonio Polymer Clay Guild

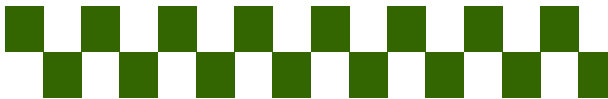
Our guild was organized exclusively for charitable and educational purposes:

To stimulate an interest in polymer clay.

To advance the art of polymer clay.

To hold educational programs and workshops in the design and techniques of polymer clay.

To serve as the focal point for polymer clay artists in South Texas.



Meetings:

4th Saturday of the month, 1-4 pm

Location:

Sam's Burger Joint

330 E Grayson (corner of Grayson & Broadway)

Contact Info:

Membership Coordinator

Pancho Knutson: 210-508-3629

Other contacts

Patty Barnes: 361-786-4146

Judi Weers: 210-408-7817

San Antonio Polymer Clay Guild

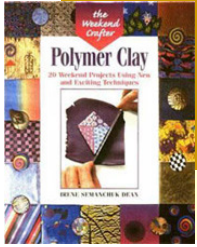
*I think, therefore
I clay*



Oriental Necklace by Linda Kirk. Polymer clay textured, gold micro beads, oriental papers and coin.

www.sapcg.org

Benefits of Membership



The Weekend Crafter by Irene Semanchuk Dean.

Library

SAPCG maintains a large and growing library of books, periodicals, and videos for use by our membership. Simply contact our librarian Mary Ruth at aagarita@satx.rr.com to reserve the titles you want and she will have them available for you at our next meeting.

TEXTural by Eva Buchala. Textured polymer clay covers, Coptic binding with Ingres paper. Won 2nd place in the NPCG Progress & Possibilities '06, Mixed Media.



Resources

In addition to the various local programs offered, the guild provides a great source of information about local and national classes, conventions, contests, publishing opportunities and exhibits. Members of our guild have appeared on national tv, won national and local contests and been featured in national magazines.



Beads by Sharlin Korbar.

Bead Jar

Our Bead Jar is a fun way for members to share their work with another member. Throughout the year, we share and deposit our extra beads into the bead jar. At the end of the year, one lucky person wins the whole jar!

Programs



Susan Finch teaching Gwen Gibson's Shaving Cream beads.

Demos

Most meetings include a demonstration or workshop on a polymer clay technique. Guild members volunteer to share their expertise or to learn a technique so they can share it with others. Resources include magazines, books, and techniques developed by our own members.

Bottles of Hope

Our guild participates in the international Bottles of Hope project which makes polymer clay covered bottles as gifts for patients undergoing cancer treatment. It was started in 1999 by a cancer survivor and polymer clay artist. More information can be found at the website www.bottlesofhope.org.



Rose bottle by Carlos Haun. Sculpted roses over pearl clay.

Raffles

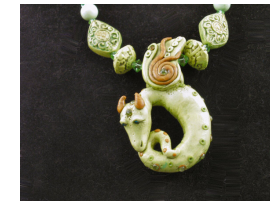
At each guild meeting, we have a raffle to help raise funds for the guild. Members bring a wide variety of items related to polymer clay (tools, jewelry findings, materials and other supplies) and donate them for the raffle. It's \$1 per ticket; names are drawn at random from a "hat." The money made from the raffles is used to help the guild purchase new library materials, defray the cost of special events and other activities related to the purposes of the guild.

Special Events

Crystal pendant by Susan Finch. Made at Lisa Pavelka's workshop with Swarovski crystal square and polymer clay.



At least once a year the guild has a nationally-known guest teacher in for a special weekend workshop. Some, but not all, of our guests include Judith Skinner, Katherine Dewey, and Sarah Shriver and Lisa Pavelka. Special events usually encompass two full days of learning new techniques, enhancing well-known ones, and just having fun claying and spending concentrated time with others who enjoy polymer clay as much as you do. Members enjoy special prices on these weekend workshops.



Sculpted dragon necklace a la Christi Friesen by Ruphia Peche.

**San Antonio
Polymer Clay Guild**

PO Box 380642
San Antonio, TX 78268